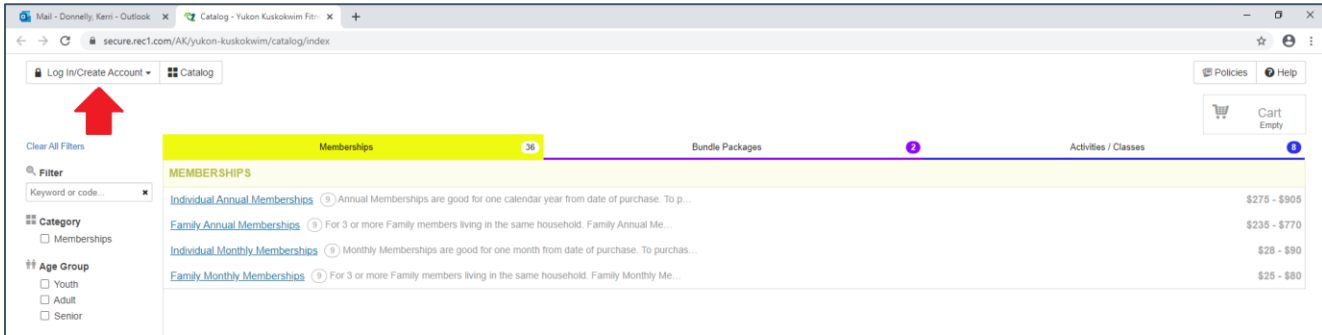


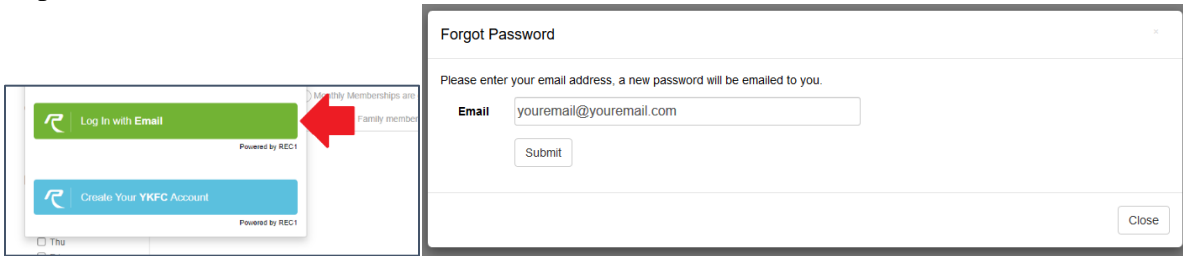
Login or Setup New Account

If you experience any issues with this process please contact us at ykfc@cityofbethel.net.

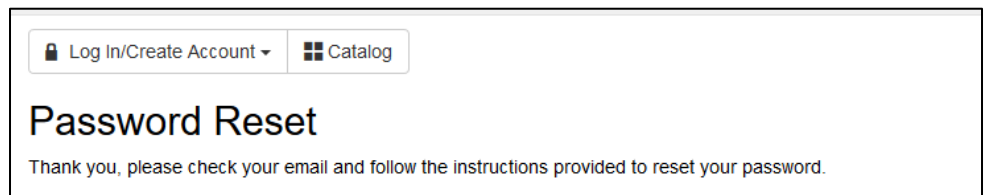
- 1) Visit: <https://secure.rec1.com/AK/yukon-kuskokwim/catalog/index>
- 2) Click on Log/In Create Account in the top left corner.



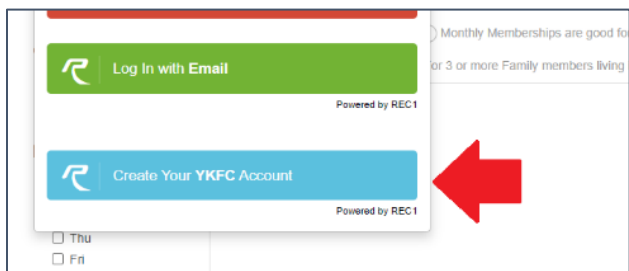
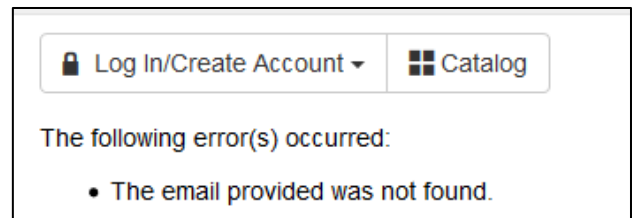
- 3) You might already have an account with us, to double check select “Log in with Email” and try resetting your password.



If there is an account associated with that email you will receive this message.



If you receive this message, there is not an account associated with that email address and you should try an alternate address or create a new account using the “Create Your YKFC Account” button.



Login or Setup New Account

If you experience any issues with this process please contact us at ykfc@cityofbethel.net.

- 4) Please complete **all** fields for your account. Make sure your password is something you'll be able to remember! Select “Next step: Other Account Members” in the bottom right corner after entering all of your account information.

- 5) Add any additional account members here by selecting “Add Account Member”. You may skip this step if you do not wish to add any additional account members. Please select “Save & Close” to complete your account setup.

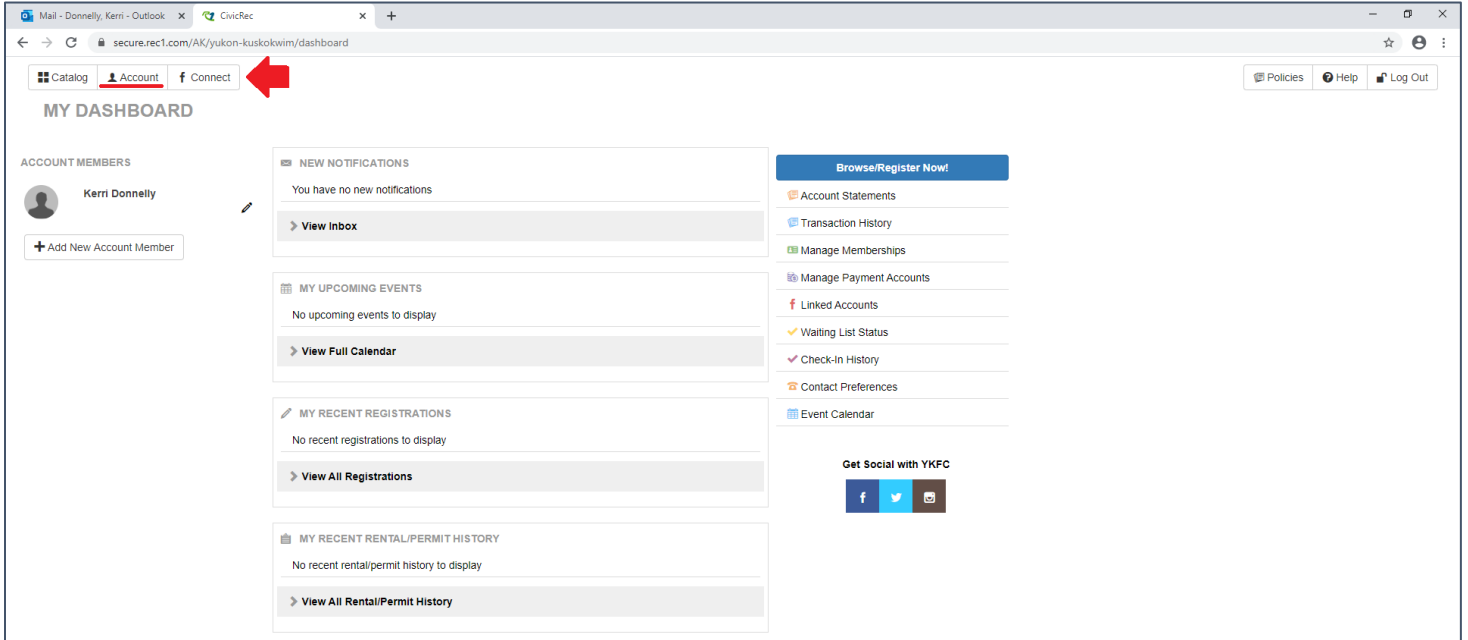
- 6) Your account is active! You are now back on the home screen and should see your name under “Eligibility” on the left navigation panel.

Membership Type	Description	Price Range
Individual Annual Memberships	Annual Memberships are good for one calendar year from date of purchase. To p...	\$275 - \$905
Family Annual Memberships	For 3 or more Family members living in the same household. Family Annual Me...	\$235 - \$770
Individual Monthly Memberships	Monthly Memberships are good for one month from date of purchase. To purchas...	\$28 - \$90
Family Monthly Memberships	For 3 or more Family members living in the same household. Family Monthly Me...	\$25 - \$80

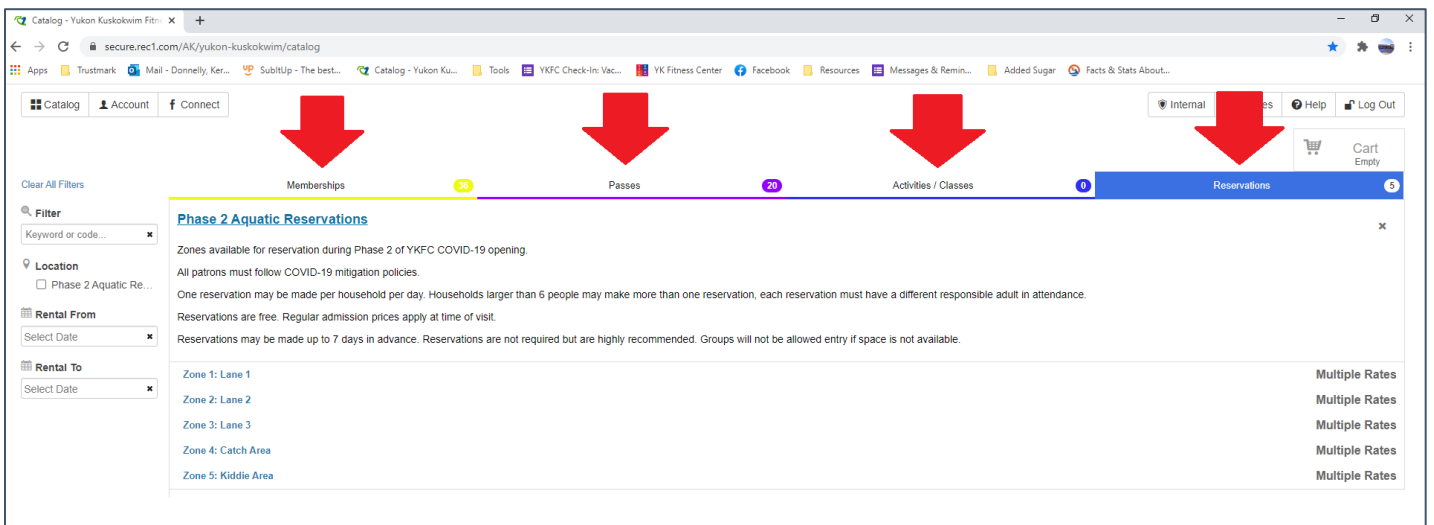
Login or Setup New Account

If you experience any issues with this process please contact us at ykfc@cityofbethel.net.

- 7) If you would like to review your account information, select “Account” on the top navigation panel.



- 8) You can now purchase a membership, bundle package, pool passes, or make a pool zone reservation.



We hope to see soon. 😊